



NEWSLETTER

SKI CLUB

December 2000

WEBSITE: www.gmskiclub.org

GM SKI CLUB FOUNDED 1957 VOLUME XLIV, ISSUE XII

Friday Night Out

This month's Friday fun spot will be the Acatraz Brewing Company Restaurant located inside The Great Lakes Crossing Mall Dec. 15th. Please see the Calendar of Events and come and enjoy this pre-holiday get together.

Last month's venue was the Moose Preserve on Woodward & Square Lake. We had a great turnout of nearly 30 club members and guests who enjoyed this spot known for its varied menu with an accent on "wild game."



Holiday Party

Please come and join us for a First Time Ever ½ Price Event---For Members! (Our Gift to You)

The venue will be the Berkley American Legion, Saturday, December 9, 2000 7p.m.-12:30 a.m.

Located on 12 Mile East of Coolidge

Included will be

- FULL BUFFET •OPEN BAR •DANCING
- LIVE ENTERTAINMENT

Every Member in good standing can buy their first ticket for just \$20.00

(Where else can you get all that for just one Andy Jackson?)

Reduced Price for additional tickets for your guests is \$30.00

Reduced Prices apply only to advance sales----All Tickets at the Door Will Be \$40.00

Please Call Patti At 248-540-4547 For Ticket Info

Regarding Holiday Party

GM'er's I can promise you that this will be a Fun-Filled Evening

I need just ONE thing from you---Your Commitment!
Please call and I will hold your ticket at the Special 1/2 Price--\$20

I also need a "head count" so we have enough good food and drink

Remember, our Party is this Saturday---December 9th
PLEASE CALL NOW TO RESERVE YOUR TICKET
Patti Kadlec

December General Meeting *Berkley Front*

3087 12 Mile between Coolidge and Greenfield

(One mile West of Woodward Ave.)

Cash bar

Come Join us for a



"SNOWBALL FIGHT!"

No, not really ... but we will be serving you up some MeatBALLS and 'TOSSING' out a small gift for every PAID admission, compliments of The GM Ski Club!

Hey, use your imagination here ...but no food fights allowed.

And, in case that isn't enough for you ... we will also be giving away another wonderful ... Door Prize - Anyone with a PAID admission to the December General Meeting will be eligible to win a \$25 gift certificate to The Outback Steakhouse! You don't want to miss out on this one! Please join us. Guests are always welcome!

- Private upstairs (smoke free) meeting room
- Admission \$2.00 Members, \$4.00 Guests
- 'Snowball Style' Hors d'oeuvres
- Holiday Sweets at every table

2nd Thursday of the Month
The fun starts at 7:30 p.m.
December 14, 2000
Guests are always welcome

GM SKI CLUB BOARD OF DIRECTORS

President

Bill Given, 248-540-4547

Vice President

Les Skrzycki, 248-693-1794

Treasurer

Gretchen Wnukowski, 248-205-4327

Secretary

Alan Toomey, 248-391-5180

Activities

Patti-Rae Kadlec, 248-540-4547

Newsletter

Michael Bourke, 810-776-7685

Hospitality

Diane Reaser, 248-544-4387

Entertainment

Tim Johnson, 810-446-8888

Membership

Karen Lampson, 810-463-4040

Publicity

Linda Pendergast, 248-549-2512

Ski Trips

Ted Zubeck, 248-549-5082

Racing

Pat O'Keefe, 248-478-9078

Bruce Johnson, 248-624-0109

Ski Instruction / Athletic

Les Skrzycki, 248-693-1794

MDSC

Bill Tory, 810-468-2051

Past President

Craig Petku, 248-394-0467

The board meets once a month, the week after the General Meeting

GM SKI CLUB MEMBERSHIP APPLICATION

Name: _____

Address: _____

City: _____ ZIP: _____

Phone: (day) _____ (Evening) _____

E-mail address: _____

Date of Birth: _____

☐ **REGULAR MEMBERSHIP \$15**

In consideration for me being able to join the GM Ski Club, I agree to abide by the GM SKI Clubs By-Laws and constitution. Membership runs October through September.

Signature: _____ Date: _____

How did you hear about the GM Ski Club? ☐ Friend ☐ Newspaper
☐ Racing ☐ Event (list) _____

Skiing Interest: ☐ Downhill ☐ Racing ☐ X-country ☐ Snowboard

Skiing Ability: ☐ Beginner ☐ Intermediate ☐ Advanced

I'd like to help: ☐ Ski Trips ☐ Publicity ☐ General Meetings

☐ Activities ☐ Other (list) _____

• **Referral:** I am a New Member and was referred to the GM Ski Club by:

Members Name: _____

Payment made by: ☐ Cash ☐ Check Check # _____

TO JOIN THE GM SKI CLUB:

Please send completed application below along with check (payable to "GM Ski Club") to:

GM Ski Club
c/o Karen Lampson
25420 Quarterdeck
Harrison Twp., Mi 48045

Or sign-up at our General Meeting.
Membership runs Oct. through Sept.
Mail changes of address to the above.

You don't have to work for General Motors to belong to the GM Ski Club!

Sunday Afternoon Wallyball

Sunday afternoon at 2:00 p.m., some of our members get together for an informal and very friendly game of wallyball at Players Racquet and Fitness Club, 13750 11 Mile Road, Warren, on the service drive to I-696, east of Schoenherr.

The court time cost (\$25.00 per hour per court) is split among the players participating. The minimum number of players is 6. (Per person cost would be \$8.25)

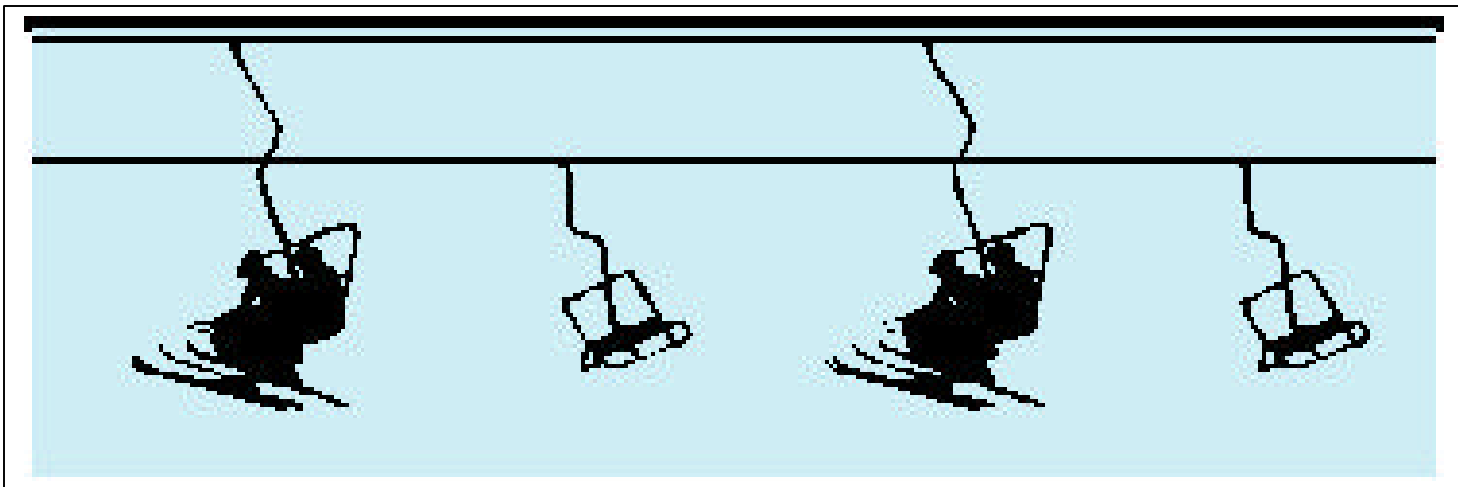
If you'd like to join in, contact Connie Casey before noon on Sunday at (810) 776-0095 or send an email to: CCASEYSLP@CS.COM. Secondary contact is Michael Bourke (810) 776-7685. Leave a phone number so we can call you in case the game is canceled due to a lack of participants.

President's Corner

With the Year 2000 shortly coming to an end, I would like to express a warm-hearted thank you to everyone and a wish for a Happy Holiday Season and a prosperous New Year.

I know that the club can continue to count on the support and enthusiasm of the membership as we enter the Year 2001 and beyond. We have much going on and much more being planned for everyone.

Bill Given



THE GM SKI CLUB
Presents a

Mt. Tremblant Ski Holiday

Quebec, Canada

February 28th to March 4th 2000
(Wednesday to Sunday)

Cost \$595.00



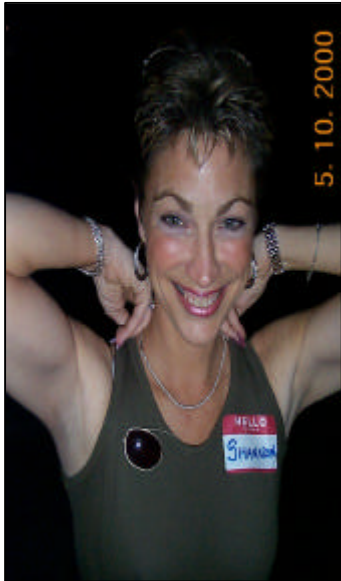
*****INCLUDES membership to GM Ski Club**

Mt .Tremblant is a *beautiful* little ski town with great skiing. It has 2100 ft. vertical and state-of-the-art snow making equipment. Rooms are slope-side and close to town. Travel is via Air Canada from convenient Windsor Airport. This trip is a great value, with the added benefit of the Canadian exchange rate.

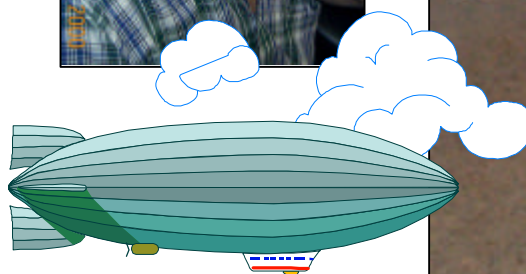
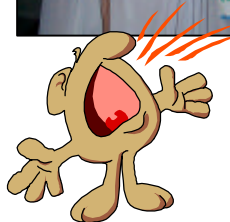
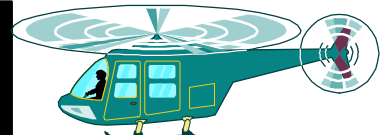
INCLUDES:

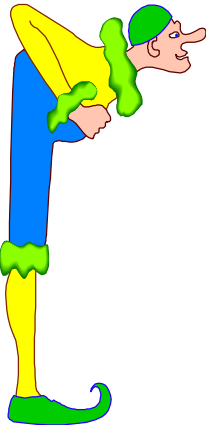
- Airfare.
- Slope side accommodations at the 4-star Chateau Tremblant. Rooms have refrigerator, microwave, etc.
- Three day lift tickets.
- Air, bus transfers.
- Taxes, tips, and surcharges
- Group "Get Together."

Contact Ted Zubeck at 248-549-5082

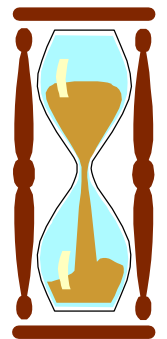


The Year 2000





So Soon
Gone



GM Ski Club Presents:

Banff / Lake Louise 2001

Cost \$705

(Only 30 Spots Available)

Saturday Jan 13th to Saturday Jan 20th, 2001

This will be the trip of the season. We have a great trip on a wonderful week long ski trip, skiing in Canada's best area, and staying in one of Canada's most friendly and hospitable communities, Banff. As if skiing wasn't enough, we will be staying in the Traveller's Inn, just two blocks from downtown Banff, a 10 minute walk to shopping, galleries, and other activities. Not a member of a ski club? Not a worry, we are giving you a free GM Ski Club Membership for going with us!

Price includes:

- Round trip airfare from Windsor to Toronto to Calgary
- Round trip motor coach transfer from airport to resort
- 7 nights accommodation at the Traveller's Inn (Double Occupancy)
- 5 day tri-area lift pass (Sunshine, Whistler, and Lake Louise)
- Shuttle bus service to all 3 ski areas
- Complimentary night skiing at Mt. Norquay on Fridays
- Wine and cheese social and two dinners
- Much, much more

Payment

Schedule:

\$225 Sign-up
\$225 Oct 15th

Contact Trip Leader: Ted Zubeck 4627 Briarwood Royal Oak, MI 48073 248-549-5082

Bald Mountain Weekend



A few of the hearty weekend campers. Rumors that they sank a duck were never substantiated, and the mystery meat in the Saturday night stew had a definite supermarket quality.



Rumors that they caught a fish were false. . .



. . .but that an alien visited were true. . .



. . .in fact, more than one.

CALENDAR OF EVENTS

DECEMBER

- 9 Sat. Holiday Party
Berkley American Legion
2079 W. 12 Mile, Berkley (East of Coolidge)
7.p.m. to 12:30 a.m.
See Newsletter article
- 14 Thur General Meeting—Berkley Front 7:30 p.m.
- 15 Fri Friday Night Out—Alcatraz Brewery
—Great Lakes Crossing Mall 7:30 p.m.
- 25 Mon MERRY CHRISTMAS/ HAPPY HOLIDAY



JANUARY

- 1 Mon. Happy New Year
- 11 Thur. General Meeting—
Berkley Front 7:30 p.m.
- 13-20 Sat/Sat. Banff/Lake Louise Ski Trip
- 21 Sun "HARVEY"—St. Dunstan's Playhouse
Cranbrook Academy -Lone Pine Rd.
2 p.m.—\$12 Call Patti: 248-540-4547
for ticket information
- 24 Wed. MDSC 1-Day Ski Excursion—Schuss/
Shanty Creek I Includes Bus ride
& LiftTicket--\$52 (or less)
Call: Scott Talcott 810-752-7255

FEBRUARY

- 8 Thur General Meeting----Berkley Front---7:30 p.m.
- 10 Sat Saturday Afternoon Out—Wah Court—Windsor
Dim Sum Adventure (Oriental Appetizers)
1 p.m.-----<\$12 American Per Person
Perhaps a Casino Trip Afterwards
Call: Your President (Bill) 248-540-4547
for Info/Reservations
- 14 Wed MDSC 1 Day Ski Excursion—(See Jan. 24)
- 24 Sat HAPPY VALENTINE'S DAY
Moonlite Bowling—Location TBD
Time 11 p.m.
Call: Bill 248-540-4547
- 28 Wed/
Sun Mt. Tremblant Ski Trip



Upcoming Events: Laser Tag, Whirlyball, Blading at the Dome



**“A ski club...
and a whole lot more”**

December at a glance

- | | |
|----------------|--|
| 9 Sat. | Holiday Party
Berkley American Legion
2079 W. 12 Mile, Berkley
(East of Coolidge)
7.p.m. to 12:30 a.m.
See Newsletter article |
| 14 Thur | General Meeting—Berkley
Front 7:30 p.m. |
| 15 Fri | Friday Night Out—
Alcatraz Brewery
—Great Lakes Crossing
Mall 7:30 p.m. |
| 25 Mon | MERRY CHRISTMAS/
HAPPY HOLIDAY |

GM SKI CLUB Website:
www.gmskiclub.org

MDSC Website: www.mdscski.org
MACC Website: www.maccracing.org

Deadline

The deadline for articles or pictures
Submitted for inclusion in this newsletter is
The second to last Thursday of the month.

The deadline for the next issue is:
5:00 p.m. Dec. 21, 2000



c/o Karen Lampson
25420 Quarterdeck
Harrison Twp., Mi 48045

First Class Postage

MEMBERSHIP EXPIRES
ON LABEL DATE
CHECK YOUR EXPIRATION!



