



“A ski club...  
and a whole lot more”

### January at a glance

- 1 Tues HAPPY NEW YEAR
- 10 Thur General Meeting—Berkley Legion—7:30 p.m.
- 12 Sat Ice Skating—Birmingham Ice Arena Afternoon—1:30 p.m.—3 p.m.  
Price: @\$5—Skate Rental Available  
Call: Patti 248-540-4547
- 12 Sat- Club Ski Trip—Big White & Silver
- 19 Sat. Star, British Columbia
- 25 Fri. Friday Night Out  
Renshaw Bar and Grill  
210 E. 14 Mile Rd., Clawson  
6:30 p.m.

### GM SKI CLUB Website:

[www.gmskiclub.org](http://www.gmskiclub.org)

(recent photos, upcoming events, membership applications, bylaws, forms, and fun music)

MDSC Website: [www.mdscski.org](http://www.mdscski.org)

MACC Website: [www.maccracing.org](http://www.maccracing.org)

### Deadline

The deadline for articles or pictures submitted for inclusion in this newsletter is **The second to last Thursday of the month.**

The deadline for the next issue is:

**5:00 p.m. January 24, 2001**

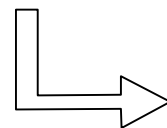
Late submissions will be held for the following issue.



c/o Alan Urban  
23840 Rensselaer  
Oak Park, MI 48237

First Class Postage

MEMBERSHIP EXPIRES  
ON LABEL DATE  
CHECK YOUR EXPIRATION



# NEWSLETTER

SKI CLUB

JANUARY 2002

WEBSITE: [www.gmskiclub.org](http://www.gmskiclub.org)

GM SKI CLUB FOUNDED 1957

VOLUME XLVI, ISSUE I



## General Meeting Thursday, January 10<sup>th</sup>

(Always the 2<sup>nd</sup> Thursday of the month)

**BERKLEY AMERICAN LEGION HALL**  
2079 West Twelve Mile Road  
(Just West of Woodward, South side of 12 Mile)

JANUARY'S GENERAL MEETING THEME:

# “SUMMER IN JANUARY”

On January 10<sup>th</sup> the doors open at 7:30 pm for socializing. Announcements begin shortly thereafter. Due to our unseasonably warm weather, we are turning January into a Summer Party! Come in that Hawaiian shirt or shorts and a T-shirt. Wear that sun block and some shades. Think summer – just for one night! January 10<sup>th</sup>.

\$2.00 Admission for our Members, \$4.00 for Guests





# SKI-ON-A-SHOESTRING WEEKEND

FEBRUARY 22, 23, 24, 2002

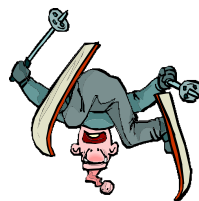
Our Ski-On-A-Shoestring will again be at the Terrace inn in Bayview just north of Petoskey. It is a real old hotel located where you see all of those beautiful old homes that were built in the early 1900's. The homes are all boarded up in the winter, but the Terrace Inn stays open and offers a great weekend ski package.

The hotel takes you back to some of your parents' yesteryears. It is not fancy. It has a large wood front porch. The rooms have curtains and pull down shades and old fashion dressers. The clothes closets have large wood moldings and the bathrooms are something we poor people had when we were kids: white tubs, tile showers and pedestal wash basins. There are no elevators. You walk up wide wooden stairs. The hallway floor slants a little, but everything is very neat, clean, and comfortable. There is a large fireplace in the lobby where you can gather to play cards or games. The lobby is furnished with tables and stuffed chairs, and someone usually plays the piano.



Besides the quaintness of this place, the price of the weekend ski package is unbeatable. The weekend package is based on two per room and includes the following:

- 1) Two nights lodging, two per room.
- 2) Two continental breakfasts: cereal, milk, coffee, rolls, juice, muffins, and fruit.
- 3) Saturday evening dinner (part buffet, part sit-down),
- 4) Sleigh ride
- 5) Murder mystery entertainment after dinner Saturday night.
- 6) Cross-country ski trails.
- 7) All taxes and tips.
- 8) Deluxe specialty rooms (*Somewhere in Time*, Mark Twain, Lighthouses)
- 9) Jacuzzi suite



TOTAL WEEKEND PRICE:  
Standard Rooms \$120.00 per person  
Deluxe Rooms \$140.00 per person

NOT included: Transportation and downhill lift tickets!  
(Downhill skiing is available at Boyne or Nubs)  
Only 40 people can make this trip.

Make checks payable to: Warren Puggini  
Checks MUST REACH Warren no later than JANUARY 26, 2002!

Reservations will be made in the order that I receive your checks. A stand-by list will be made after the first 40 checks are received. NO REFUNDS!

More rooms added!  
Still almost sold out!

## SKI-ON-A-SHOESTRING WEEKEND

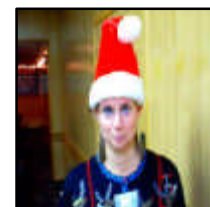
Name \_\_\_\_\_  
Address \_\_\_\_\_  
City \_\_\_\_\_ State \_\_\_\_\_ Zip \_\_\_\_\_  
Phone H \_\_\_\_\_ W \_\_\_\_\_  
Room Partner \_\_\_\_\_



Will share transportation Yes \_\_\_ No \_\_\_  
Standard Room @\$120.00  
Deluxe Room @\$140.00

NOTE: FOR YOUR SAFETY, ALL ROOMS ARE NON-SMOKING  
Warren Puggini  
38634 Sycamore Meadow  
Clinton Township, MI 48036  
(810) 465-6760

## From your Hospitality Chair ...



Cathy Ragan  
Reindeer



Christmas noses

We had a great time at the December General Meeting. Our Season's Greeting Theme brought in several Christmas Elves, and we even spotted a 'Red-Nosed Reindeer.'

Come join us at our next general meeting on January 10<sup>th</sup>. We're having a **SUMMER PARTY IN**

**JANUARY!** Dress for a beach party. This should be a good one! See you all on January 10<sup>th</sup> at the Berkley American Legion.

Diane Reaser  
Hospitality Chair



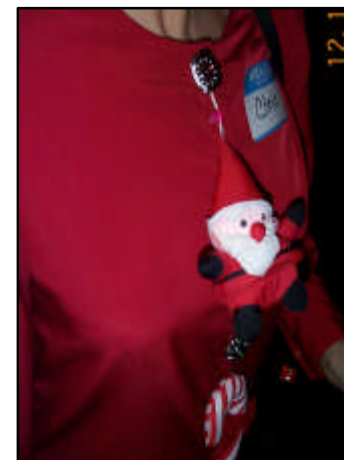
Ed & Diane Lowe, Christmas Elves



More Christmas elves



Gang of Elves



Why is this Santa smiling?



Christmas toeses



12.13.

*Best of the Best...*



*...Now,  
and for the rest  
of the year. . .*

### Newsletter Production

This newsletter was collated and processed for mailing by the vocational students at Oakland Schools Autism Program.

If you have mailing or collating needs, please contact Sandy Horton at Oakland School Autism Program, (248) 288-4523. There is no charge, but small donations are accepted for program activities (pizza parties, etc ...)

### *Treasurer's report*

The treasurer's report for December 13, 2001 is **\$15,402.18**.

**-Linda Urban  
Treasurer**

# **BIG WHITE & SILVER STAR**

**A TRUE SKIERS  
HOLIDAY  
Saturday  
January 12, 2002 to  
Saturday  
January 19, 2002**

- ❖ A TWO-DESTINATION TRIP
- ❖ SKI IN - SKI OUT
- ❖ THE BEAUTY OF BRITISH COLUMBIA
- ❖ 2600 VERTICAL FEET OF POWDER -NO LIFT LINES
- ❖ TWO TO A ROOM—DELUXE ACCOMODATIONS
- ❖ 6 DAYS OF SKIING
- ❖ FLY FROM WINDSOR TO KELOWNA, BRITISH COLUMBIA
- ❖ ALL FLIGHTS AND TRANSFERS INCLUDED.



**ONLY \$875.00 PER PERSON**

Contact

**TED ZUBECK  
4627 BRIARWOOD  
ROYAL OAK, MI 48073  
248 549-5082  
[TZUBECK4627@HOME.COM](mailto:TZUBECK4627@HOME.COM)**

### **PAYMENT SCHEDULE**

10/15/2001	\$300.00
11/15/2001	\$288.00
12/15/2001	\$287.00



## GM SKI CLUB BOARD OF DIRECTORS

### President

Bill Given, 248-540-4547

### Vice President

Les Skrzycki, 248-693-1794

### Treasurer

Linda Urban, 248-545-2520

### Secretary

Tom Richardson, 248-674-2477

### Activities

Patti-Rae Given, 248-540-4547

### Newsletter

Michael Bourke, 810-776-7685

### Hospitality

Diane Reaser, 248-544-4387

### Membership

Alan Urban, 248-545-2520

### Publicity

Linda Pendergast, 248-549-2512

### Ski Trips

Ted Zubeck, 248-549-5082

### Racing

Pat O'Keefe, 248-478-9078

### Ski Instruction / Athletic

Les Skrzycki, 248-693-1794

### MDSC

Bill Tory, 810-468-2051

### Webmaster

Alan Toomey, 248-391-5180

The board meets once a month, the Week after the General Meeting

## TO JOIN THE GM SKI CLUB:

Please send completed application below along with check (payable to "GM Ski Club") to:

**GM Ski Club**  
c/o Alan Urban  
23840 Rensselaer  
Oak Park, MI 48237

Or sign-up at our General Meeting. Membership runs Oct. through Sept. Mail changes of address to the above.

**You don't have to work for General Motors to belong to the GM Ski Club!**

**Wallyball is back!**

**Every Sunday, 1:00 p.m.**

**Players Racquet and Fitness Club**  
13750 11 Mile Rd. at Schoenherr

Call Connie Gasey for information  
586-776-0095

We have a dedicated group of eight or ten who are showing up regularly, but we'd like to expand that to between 12 and 16.

We'll have two courts, no more than four persons to a team, and players can choose between the competitive game and the friendly

### Board Meeting

Everyone is welcome to attend the monthly meeting of our Board of Directors, held the Tuesday after the general meeting. We order drinks and dinner at 6:30 p.m., socialize, and occasionally also conduct club business.

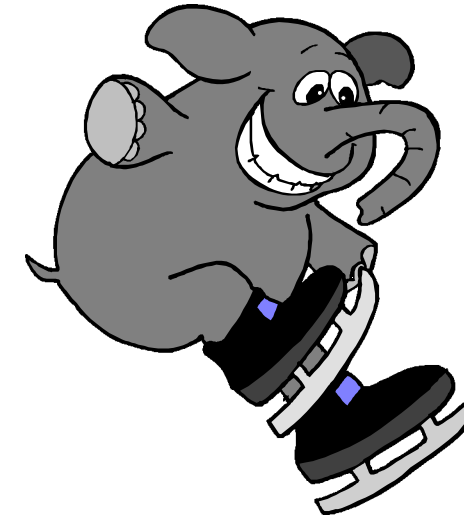
The next board meeting is Tuesday, Jan. 15, at Chi Chi's, just south of 14 Mile Road and one block east of I-75.

**-G.M. Ski Club Board**



# Calendar Of Events

## January



- |         |  |
|---------|--|
| 1 Tues  | HAPPY NEW YEAR   |
| 10 Thur | General Meeting—Berkley Legion----7:30 p.m.  |
| 12 Sat  | Ice Skating---Birmingham Ice Arena<br>Afternoon----1:30 p.m.—3 p.m.<br>Price: @\$5---Skate Rental Available<br>Call: Patti 248-540-4547  |
| 12 Sat- | Club Ski Trip—BIG WHITE & SILVER STAR  |
| 19 Sat  | BRITISH COLUMBIA<br>See Flyer in Newsletter  |
| 25 Fri  | Friday Night Out—Renshaw Bar & Grill<br>210 E. 14 Mile Rd., Clawson<br>"Best Fish Fry in Town"<br>Arrive early to reserve a seat---come by 6:30 p.m.<br>Call: Patti 248-540-4547 |

## February

- |         |  |
|---------|--|
| 7 Thur  | J.D.'s—Dueling Pianos—7:30 p.m.<br>1 North Saginaw—Pontiac<br>LADIES NIGHT—NO COVER FOR LADIES<br>Men--\$5 Cover<br>Come and enjoy a Wild and Fun night of music<br>Call: Patti 248-540-4547 |
| 14 Thur | General Meeting—Berkley American Legion—7:30 p.m.  |
| 22 Fri  | Ski-On-A-Shoestring Weekend  |
| 24 Sun  | Terrace Inn—Bayview (Just North of Petoskey)<br>See Newsletter or Call: Warren 810-465-6760  |
| 28 Thur | Restaurant of the Month—the New WoW<br>Oriental and Asian Specialties<br>32832 Woodward, Royal Oak<br>Call: Bill 248-540-4547 for reservations   |



## March

- |          |       |   |
|----------|-------|---|
| March 14 | Thur. | General Meeting—Berkley American Legion—7:30 p.m. |
| March 17 | Sun.  | Happy St. Patrick's Day                           |
| March 20 | Wens. | First Day of Spring.                              |
| March 28 | Thur. | Restaurant of the Month (to be announced)         |



## GM SKI CLUB MEMBERSHIP APPLICATION

Name: \_\_\_\_\_

Address: \_\_\_\_\_

City: \_\_\_\_\_ Zip: \_\_\_\_\_

Phone: (day) \_\_\_\_\_ (Evening) \_\_\_\_\_

Date of Birth \_\_\_\_\_

**REGULAR MEMBERSHIP \$20**

In consideration for me being able to join the GM Ski Club, I agree to abide by the GM SKI Clubs By-Laws and constitution. Membership runs October through September.

Signature: \_\_\_\_\_ Date: \_\_\_\_\_

How did you hear about the GM Ski Club?  Friend  Newspaper

Racing  Event (list) \_\_\_\_\_

### Skiing Interest:

- Downhill  
 Racing  
 X-country  
 Snowboard

### Skiing Ability:

- Beginner  
 Intermediate  
 Advanced

### I'd like to help:

- Ski Trips  
 Publicity  
 General Meetings  
 Activities  
 Other (list) \_\_\_\_\_

• **Referral:** I am a New Member and was referred to the GM Ski Club by:

Referring Members Name: \_\_\_\_\_

Payment made by:  Cash  Check Check # \_\_\_\_\_